

TESTING AND MAINTENANCE

- Test your smoke detectors every month. For hard to reach units, use a broom handle or stick to press the test button.
- Replace batteries once a year. Use daylight savings time as your reminder. "Change your clocks... change your batteries."
- If the low-battery signal begins to chirp, replace the battery immediately.
- Vacuum the outside covers periodically to remove dust and dirt particles.

REPLACEMENT

Smoke detectors monitor the air 24 hours a day, every day.

Smoke Detector Failure Rates

- Second - tenth year: 16-30%
- More than ten years old: 30-50%

For best protection, replace your smoke detectors every 5-10 years, or consider budgeting more money up front to purchase new detectors with a built in ten-year battery.

If you are not sure how old your smoke detectors are, it is best to replace them immediately!

**SMOKE DETECTORS
SAVE LIVES!**

ADDITIONAL SAFETY TIPS

- Sleep with your bedroom doors closed. This slows the spread of smoke and flames.
- Purchase and use ashtrays that have the center support feature and never smoke in bed.
- Do not leave candles or space heaters unattended.
- Store matches and lighters out of the reach of children.



BOISE FIRE DEPARTMENT

FIRE PREVENTION DIVISION

(208) 570-6500

TDD/TTY (800) 377-3529

CITYOFBOISE.ORG/FIRE

**FOR ALL EMERGENCIES
DIAL 911**



SMOKE DETECTOR

SAFETY TIPS

EVERY YEAR IN THE U.S. OVER 5,000
PEOPLE ARE KILLED IN HOUSE FIRES.



FACT

Working smoke detectors increase your chance of surviving a fire by more than **50%**!

FACT

The majority of residential fire fatalities occur at night while people are asleep. If a fire occurs in your home, your chances of survival are greatly increased if you have working smoke detectors!

STEP 1

PURCHASE, INSTALL AND MAINTAIN SMOKE DETECTORS IN YOUR HOME.

STEP 2

DEVELOP AND PRACTICE A HOME ESCAPE PLAN WITH YOUR FAMILY.

INSTALLATION

- Mount smoke detectors in the middle of the ceiling.
- For wall-mounted units, place them at least three feet (3') away from any corner and four to six inches (4-6") below the ceiling.
- Do not install smoke detectors near heating or cooling ducts.
- In mobile home units, install smoke detectors on inside walls.

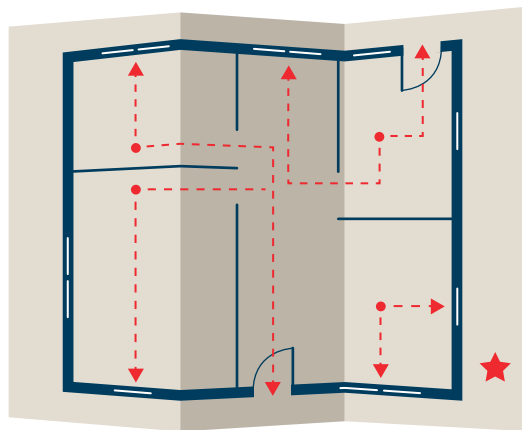


NUISANCE ALARMS

If a detector regularly responds to cooking smoke or shower steam, you may consider the following:

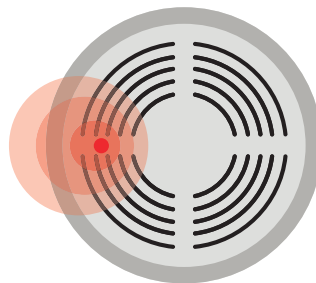
- Replace the detector with one that has a silence/hush button feature.
- Move the detector further away or relocate to a wall to give smoke or steam a chance to dissipate before reaching the unit.
- Replace the unit with a photoelectric detector, which is less affected by cooking smoke or steam (packaging or owner's manual indicates the type of detector).

ESCAPE PLAN

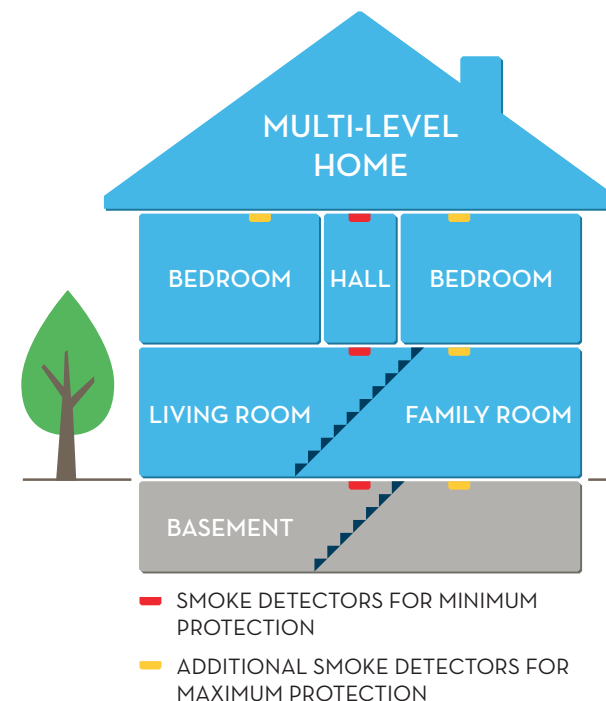


Develop an emergency escape plan for your household that includes two exits out of every room and a special meeting place outside (e.g. mailbox, tree or neighbor's driveway). Practice the plan with ALL members of your household.

- Teach children how to operate window locks. Second-story windows may require a store-bought escape ladder to enable a safe escape.
- Teach all members of your household to crawl low if there is smoke.
- Consider that family members with special needs may need assistance.



HOW MANY AND WHERE?



- For MINIMUM protection, install smoke detectors outside each sleeping area and for homes with more than one floor, place one on every level of your home (including the basement).
- For MAXIMUM lifesaving protection, the fire department recommends installing smoke detectors in each bedroom, in each living area and on every level of your home (including the basement).
- In new homes and remodels, the fire code requires the maximum coverage.