



PARKS AND  
RECREATION

City of Boise

# Open Space and Clean Water Partnership Program

2023 Application Packet



# OPEN SPACE AND CLEAN WATER PARTNERSHIP PROGRAM

## Conservation Criteria

### Category 1: Critical Open Space

#### Criteria Statements:

- Improves wildlife habitat, promotes native plant or rare plant diversity
- Improves or contributes to open space and its role in climate resilience
- Enhances or protects clean water resources
- Provides various non-motorized outdoor recreational opportunities
- Enhances culture, wellness, sense of place, and/or social connections
- Serves as a unique open space opportunity in areas outside the Boise Foothills to ensure the entire city has access to open spaces and parks
- Promotes habitat within the city to ensure wildlife viewing opportunities for future generations
- Supports best available science to inform land management decision making and quantify the benefits of open spaces

### Category 2: Clean Water

#### Criteria Statements:

- Protects or enhances riparian and river habitat for terrestrial and aquatic wildlife
- Supports best available science to guide management decisions that support clean water and habitat along and within the Boise River and its watershed
- Enhances or restores wetland areas along the Boise River and its tributaries
- Improves water quality with activities such as invasive species management programs, sediment removal, streambank stabilization, permeable pavement, and/or creation of wetlands to naturally improve water quality
- Promotes water conservation efforts to support clean drinking water from both ground and surface water resources
- Supports efforts to better understand clean water challenges (ex. emerging pollutants and climate change) to inform and improve restoration efforts.

### Category 3: Native Habitat and Wildlife

#### Criteria Statements:

- Conserves/creates wildlife and/or pollinator habitat and promotes native plant species
- Supports native plant communities and habitat resilience based on changing climate conditions
- Creates, connects or preserves critical habitat to maintain wildlife corridors
- Improves our understanding of the function of native habitat in serving wildlife and human systems
- Improves/enhances water quality to support fisheries and aquatic wildlife
- Establishes more fire-resistant, native vegetation to help control wildfire
- Supports efforts and decision making to restore habitat on public lands following fire disturbance

## Category 4: Trails or Pathways

### Criteria Statements:

- Enhances or creates pathways, trails or other non-motorized connections outside of the Boise Foothills that improve proximity and access to open spaces and other parks resources for residents across the city
- Supports the Ridge to Rivers trail network and community access to the Boise Foothills
- Supports community way-finding efforts to ease connectivity from urban areas to open space/park amenities
- Supports efforts to enhance accessibility to open spaces for those that have mobility impairments
- Improves safety for non-motorized and/or recreational mobility

## Category 5: Community Engagement/Partnerships

### Criteria Statements:

- Promotes partnerships, shared responsibility, and a sense of community
- Enhances interpretive signage and increases education regarding native ecosystems
- Engages in restoration-focused volunteer projects
- Strengthens and defines ecological and economic benefits of open space
- Creates diverse partner approach to climate action, resilience and mitigation
- Brings diverse funding to the project to strengthen community action

# OPEN SPACE AND CLEAN WATER PARTNERSHIP PROGRAM

## Improvement Project Application

### Section 1: Contact Information

Name of Organization	Boise Parks and Recreation
Name of Project Contact	Sara Arkle, Parks Superintendent
Street Address	1104 Royal Boulevard
City, State and Zip	Boise, ID 836706
Phone	208-608-7637
E-Mail Address	sarkle@cityofboise.org

### Section 2: Conservation Criteria

According to Boise City Code 2-11-06, the City of Boise seeks to achieve conservation goals through the implementation of improvement projects in areas such as the Boise River and the Boise Foothills. These conservation goals include protecting and conserving clean water and drinking water, safeguarding critical wildlife habitat, protecting critical open space, preserving native plant species and enhancing trails and recreational opportunities. Criteria categories have been defined by these goals as set forth by the Open Space and Clean Water levy fund and by City approved plans and initiatives for the enhancement of Boise's natural amenities.

Check each category that applies to the project proposal:

- |   |   |
|---|---|
| <input checked="" type="checkbox"/> Critical Open Space         | <input checked="" type="checkbox"/> Trails or Pathways                |
| <input type="checkbox"/> Clean Water                            | <input checked="" type="checkbox"/> Community Engagement/Partnerships |
| <input checked="" type="checkbox"/> Native Habitat and Wildlife |   |

### Section 3: Project Description

Using the Conservation Criteria Guide, please provide a clear and concise overview of the proposed project.

**PROJECT NAME:** Linear Park and Pathway at West Goddard Road

Boise Parks and Recreation is in the planning phase of development for a 3-acre linear park and pathway along West Goddard Road. The property, which is adjacent to Settlers Canal and across the street from Capital High School, was donated to the City of Boise by the Settlers Irrigation District in July 2022.

The linear park and pathway master plan design was developed based on stakeholder initiative and community feedback. Design elements include a shaded transit stop with a public art element, pollinator plantings with native shrubs and perennials, 10-foot-wide accessible multi-use pathway, shade pavilion with seating, and raised seat walls.

The project will improve access to open space by adding 685 households to a 10-minute walk, incorporating sensory and pollinator gardens, providing accessible non-motorized recreation opportunities, and promoting a shared sense of responsibility and community.

## Section 4: Meeting the City's Goals

Please explain how this project will meet each of the conservation goals highlighted on pgs. 5-6 or address the community plans and initiatives identified on pg. 1 of this packet.

The linear park and pathway along Goddard Road meets multiple conservation criteria and provides an exciting opportunity for an open space improvement project on the West Bench.

### CRITICAL OPEN SPACE

The linear park and pathway will provide non-motorized recreational opportunities with multiple accessible pathways and sensory gardens. Native plants, public art, seating walls and a shade pavilion with seating provide a space for social connections and environmental education opportunities while enjoying open space. This is a unique property, outside of the Boise Foothills, that will contribute to informed land management of parks and open space.

### NATIVE HABITAT AND WILDLIFE

The improvement project will create pollinator habitat and promote native plant species. Pollinator gardens and sensory gardens will host a variety of native shrubs and perennials to attract pollinators.

### TRAILS OR PATHWAYS

The linear park creates pathways outside of the Boise Foothills, connecting community members from urban areas to open space and outdoor park amenities. The linear park and pathway will add 685 households to the city's 10-Minute Walk to a Park coverage goal, advancing open space access for residents across the city. All pathways throughout the park will be accessible and built to enhance existing crosswalk safety + accessibility.

### COMMUNITY ENGAGEMENT/PARTNERSHIPS

This project has been a community effort with contributions from the West Bench Neighborhood Association, Energize our Neighborhoods program, the Boise School District, and the University of Idaho.

----

Funds to build this park and pathway would advance the city's vision of creating park and open space access across Boise. This improvement project would create a connection from Hyatt Hidden Lakes Reserve to Spaulding Ranch to Mountain View Park, creating a string of parks and open space throughout various neighborhoods, environments and communities in West Boise. The Goddard Linear Park + Pathway project will add about 2,800-feet of accessible pathway between Hyatt Hidden Lakes Reserve and Spaulding Ranch.

The native habitat elements, accessible non-motorized outdoor recreation opportunities, and pathway connections made the Goddard Linear Park + Pathway a strong candidate for open space improvement project funds.

## Section 5: Project Readiness

Please answer the following three questions regarding project readiness:

- 1) Has any work been done to prepare this project for implementation?
- 2) How would you like the City to spend levy funds to enhance the proposed project?
- 3) Is the proposed project part of an ongoing or phased improvement to the Boise River or open spaces on existing owned or managed public lands?

1) Yes - the master plan design process was completed in January of 2023 following an extensive public outreach process. Construction permits, including ACHD approval, have been procured and the site is ready for construction.

2) We are requesting levy funds to enhance the proposed open space park and pathway system by constructing the one-of-a-kind linear park, establishing a connection to other park sites and providing a public park and green space with native habitat and access to open space in an urban setting. Levy funds would fully develop the park, providing critical open space and pathways.

3) The proposed project is an improvement to open spaces on existing public land owned by the City of Boise.

## Section 6: Budget

Please provide a budget overview for this project. Include levy funds requested, matching funds, and “in-kind” opportunities that have been identified for this project.

The project will include right-of-way and traffic improvements, landscaping, site amenities, a public transit installation (Together Treasure Valley funds have been applied for to fund the bus stop). A cost estimate breakdown is included in this application packet.

The project total, with contingencies, is \$2,063,718.

## Section 7: Reporting Requirements

All levy funds spent are subject an annual audit. The Boise City Open Space and Clean Water Advisory Committee will prepare annual reports detailing the expenditures, projects and activities that support the city’s conservation goals. Describe how your organization will provide updates and reports to the committee and how success and implementation efforts will be measured and recorded.

The design and development team will provide continual updates throughout construction and a final presentation will be provided upon completion of the linear park and pathway.

## Section 8: Supporting Documents

Please provide the following documents to support this application:

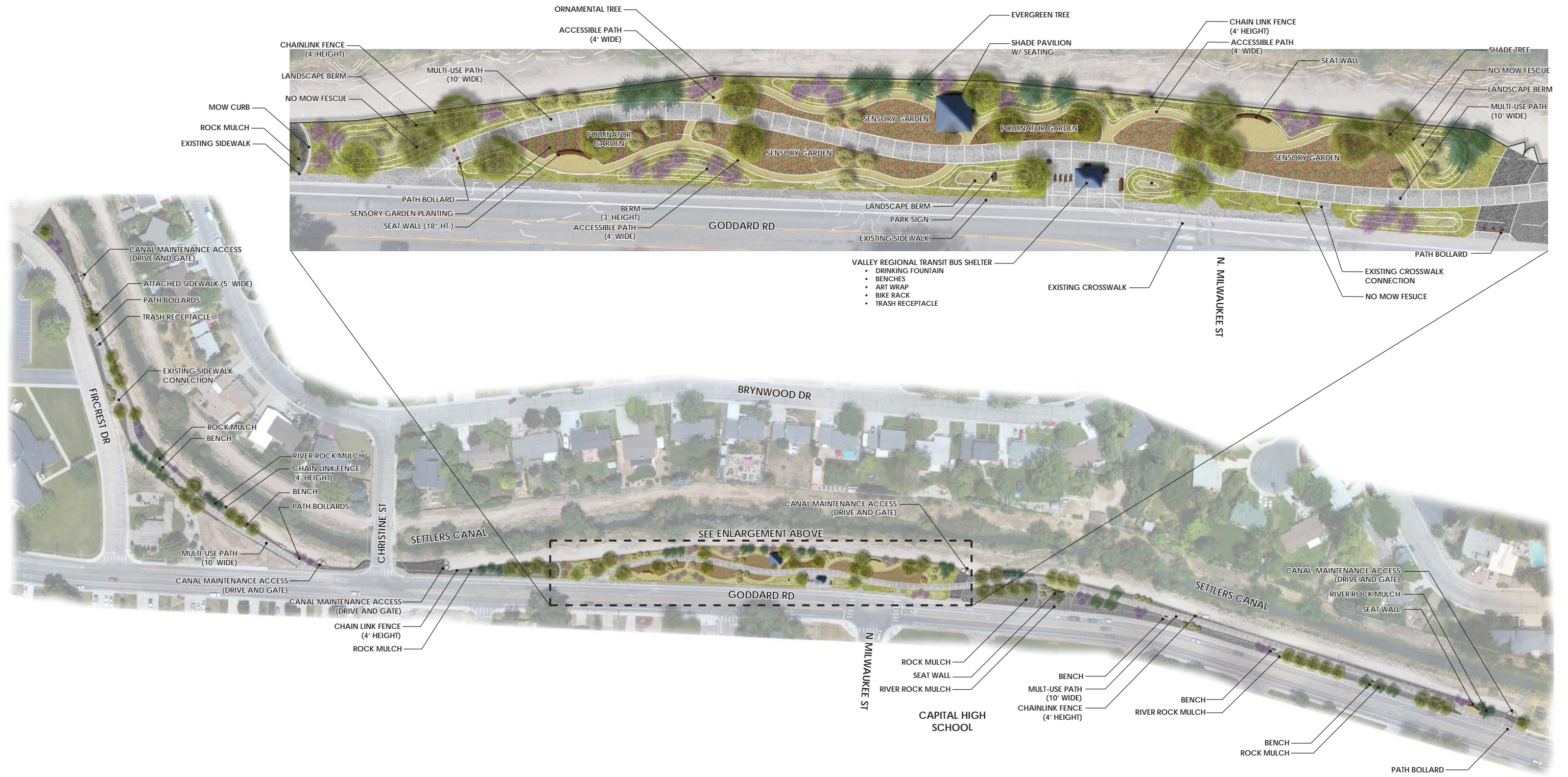
- Location map** must identify the location of your project on a map
  - o You may create a map using Google Earth Maps or other programs including the City of Boise GIS program at: <http://gis.cityofboise.org/boisemap/>.
- Contact information** for those authorized to submit receipts/invoices to the city
- Any other supporting documentation** important for your application (an example could include a more detailed budget)
- Letter(s) of support** from project partners

## Section 9: Mayor & Council Approval

Proposed projects are subject to ultimate approval by the Boise City Mayor and Boise City Council. Any levy funds committed to a selected project must comply with the city’s purchasing and procurement requirements. Such requirements include, but are not limited to, those set forth in Idaho Code, Title 67, Chapter 28, Boise City Code, Chapter 1-11 and the city’s Business Operations Manual. All levy funds must be spent solely on the benefits and goals listed above, and not on administrative costs.

# **GODDARD LINEAR PARK + PATHWAY APPLICATION MATERIALS**

Master Plan



**PROPERTY INFORMATION**  
 8350 W. GODDARD ROAD  
 3.00 ACRES  
 NEIGHBORHOOD PARK  
 WEST BENCH NA  
 ACQUIRED 2022

# GODDARD ROAD LINEAR PARK MASTER PLAN





Sensory Garden



Sensory Garden Concept - University of Idaho



Plants encourage guests to touch, taste, admire, and listen.

Shade Pavilion



Shade Pavilion - Example



Helen B. Lowder Park - City of Boise

Pollinator Garden



Variety of textures and seasonal flowering



Xeric plants tolerant of high desert climate

Seatwall



Seat Wall - Concrete



Seat Wall - Example

Walkways



Habitat for multiple pollinators



Variety of shrubs and perennials to attract pollinators



Accessible Path (4' Wide) - Decomposed Granite



Multi-Use Path (10' Wide) - Concrete

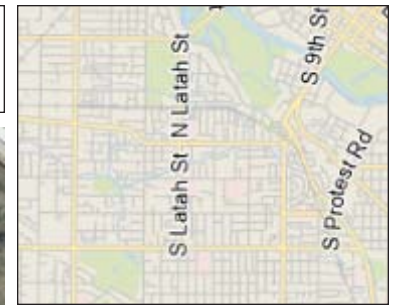
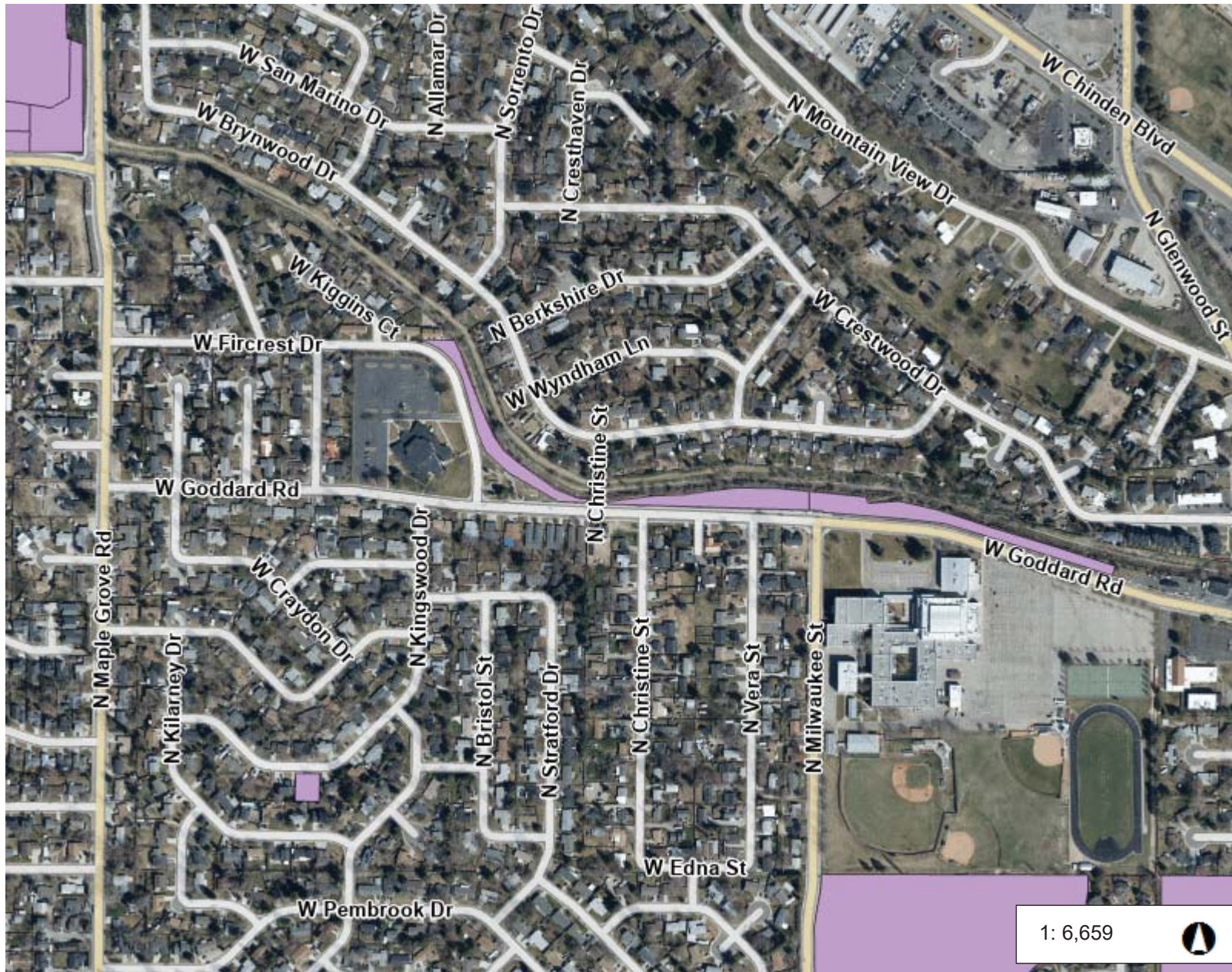
# GODDARD ROAD LINEAR PARK

# **GODDARD LINEAR PARK + PATHWAY APPLICATION MATERIALS**

Vicinity Map  
Pathway Connectivity Map



# Linear Park + Pathway on West Goddard Road



## Legend

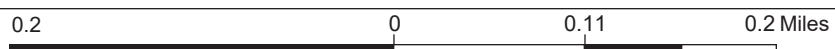
### Parks Facilities

- Administrative
- Archery
- Golf
- Ice Skating
- Memorial
- Nature Center
- Off-leash Dog area
- Recreation/Community Center
- Swimming Pool
- Trailhead
- Zoo
- Education Centers

### Trailhead

- Access Road
- Eagle Bike Park Trails
- Bogus Basin Trails
- Boise Bike Skills Park Trails
- Eagle Greenbelt Path
- Federal Way Path
- Hard Surface Greenbelt Path
- Natural Surface Greenbelt Path
- Holcomb Path
- Ridge to Rivers Trails
- Boise Owned Property

1: 6,659



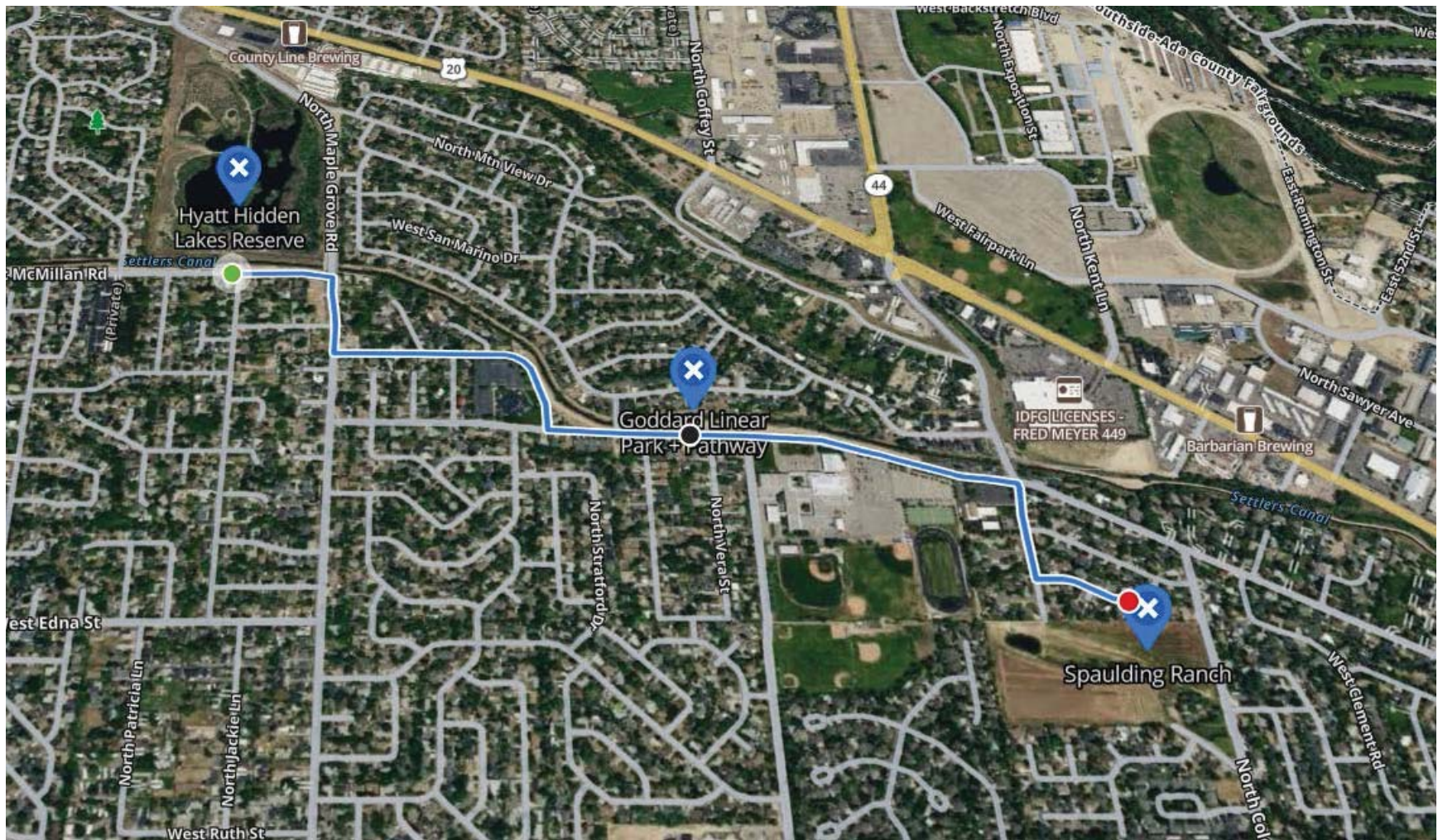
NAD\_1983\_Transverse\_Mercator  
Date Generated: 10/24/2023 8:34:55 AM

This map is a user generated static output from an Internet mapping site and is for reference only. Data layers that appear on this map may or may not be accurate, current, or otherwise reliable.  
**THIS MAP IS NOT TO BE USED FOR NAVIGATION**

## Notes

# LINEAR PARK + PATHWAY ON WEST GODDARD ROAD

Pathway Connectivity from Hyatt Hidden Lakes Reserve to Spaulding Ranch



# **GODDARD LINEAR PARK + PATHWAY APPLICATION MATERIALS**

Post-Bid Budget Estimate

**GODDARD Street Linear Park - 100% Estimate - Post Bid**

by JM 10//2023

**CONTRACT ITEMS**

Compliance

Bid Item	QTY	UNIT	UNIT VALUE	EXTENDED VALUE		
<b>Mobilization</b>	1	LS	\$ 170,426.75	\$ 170,426.75	\$ 104,726.75	\$ 83,000.00
<b>Building Permitting Fees</b>	1	LS	\$ 17,300.00	\$ 17,300.00		
<b>ROW Improvements</b>				\$ 233,933.50	\$ (46,216.15)	\$ 280,149.65
12" C900 SD Pipe	465	FT	\$ 163.00	\$ 75,795.00		
48" SD Manhole	5	EA	\$ 4,800.00	\$ 24,000.00		
DI Type I	4	EA	\$ 1,600.00	\$ 6,400.00		
DI Type IV	1	EA	\$ 1,600.00	\$ 1,600.00		
6" Vertical Curb and Gutter	1100	FT	\$ 33.00	\$ 36,300.00		
3" Rolled Curb and Gutter	386	FT	\$ 36.00	\$ 13,896.00		
Concrete Approach	1009	SF	\$ 15.00	\$ 15,135.00		
6" Minus	20	CY	\$ 29.00	\$ 580.00		
3/4" Minus	250	CY	\$ 77.00	\$ 19,250.00		
Pavement	115	CY	\$ 137.00	\$ 15,755.00		
Pavement Marking	1125	SF	\$ 2.30	\$ 2,587.50		
Concrete Walk, 4" Thick	2515	SF	\$ 9.00	\$ 22,635.00		
<b>Erosion and Traffic Control</b>				\$ 53,370.00	\$ (19,480.00)	\$ 72,850.00
SWPP Permitting	1	EA	\$ 2,500.00	\$ 2,500.00		
Temp Work Zone Traffic Control, Complete	1	LS	\$ 10,000.00	\$ 10,000.00		
Concrete Washout Facility	2	EA	\$ 1,500.00	\$ 3,000.00		
Erosion Control	1	LS	\$ 5,000.00	\$ 5,000.00		
Silt Fencing	3000	FT	\$ 6.00	\$ 18,000.00		
Inlet Protection	7	EA	\$ 150.00	\$ 1,050.00		
Construction Entrance	2	EA	\$ 2,500.00	\$ 5,000.00		
Tree Protection Fencing	2940	LF	\$ 3.00	\$ 8,820.00		
<b>Demolition</b>				\$ 34,999.25	\$ 22,999.25	\$ 12,000.00
Removal of Structures and Obstructions	1	LS	\$ 5,000.00	\$ 5,000.00		
Asphalt and Paving	10547	SF	\$ 1.50	\$ 15,820.50		
Clear and Grubb	94525	SF	\$ 0.15	\$ 14,178.75		
<b>Utilities</b>				\$ 149,924.00	\$ (2,776.00)	\$ 152,700.00
Irrigation Meter -2"	1	LS	\$ 6,500.00	\$ 6,500.00		
Electric Meter Service - 100 AMP	1	LS	\$ 8,000.00	\$ 8,000.00		
Electrical Conduit install	2132	FT	\$ 38.25	\$ 81,549.00		
Potable Water Line	25	FT	\$ 35.00	\$ 875.00		
Potable Water Iso Valve	2	EA	\$ 1,000.00	\$ 2,000.00		
Potable Water Backflow	2	EA	\$ 2,500.00	\$ 5,000.00		
Irrigation / Electrical Cabinet	1	EA	\$ 16,000.00	\$ 16,000.00		
Electrical Outlet	1	EA	\$ 30,000.00	\$ 30,000.00		
<b>Grading</b>				\$ 84,660.00	\$ (18,190.00)	\$ 102,850.00
General Excavation	672	CY	\$ 75.00	\$ 50,400.00		
Imported Topsoil	1142	CY	\$ 30.00	\$ 34,260.00		
<b>Electrical Lighting</b>				\$ 33,750.00	\$ (81,395.00)	\$ 115,145.00
Bega 33053 Luminaire	75	EA	\$ 200.00	\$ 15,000.00		
Concrete Bollard - Form in Place	75	EA	\$ 250.00	\$ 18,750.00		
<b>Hardscape</b>				\$ 283,559.00	\$ (4,720.00)	\$ 288,279.00
Crushed aggregate Pathway - 3" Depth	40	CY	\$ 42.00	\$ 1,680.00		
Crushed aggregate Pathway - 12" Base	75	CY	\$ 9.00	\$ 675.00		
Organic Binder	4225	SF	\$ 3.00	\$ 12,675.00		
Gravel Driveway -	98	CY	\$ 13.00	\$ 1,274.00		
Concrete Walk, 4" Thick	21170	SF	\$ 9.00	\$ 190,530.00		
Concrete Mow Curb - 12" Wide	32	FT	\$ 50.00	\$ 1,600.00		
Concrete Mow Curb - 6" Wide	1375	FT	\$ 35.00	\$ 48,125.00		
Concrete Seat Wall, Cast in Place	120	FT	\$ 225.00	\$ 27,000.00		
<b>Site Amenities</b>				\$ 36,810.00	\$ (6,370.00)	\$ 43,180.00
Bench - 6 Ft with back and ADA Pad	5	EA	\$ 1,500.00	\$ 7,500.00		
Litter Receptacle	3	EA	\$ 1,200.00	\$ 3,600.00		
Park Name Sign - Install w/ Concrete Pad	1	EA	\$ 4,000.00	\$ 4,000.00		
Park Rules Sign Base	4	EA	\$ 150.00	\$ 600.00		
Bicycle Racks	4	EA	\$ 500.00	\$ 2,000.00		
Bicycle Fix-It Station	1	EA	\$ 3,200.00	\$ 3,200.00		
Drinking Fountain	1	EA	\$ 8,010.00	\$ 8,010.00		
Drinking Fountain Sump Drain	1	EA	\$ 1,400.00	\$ 1,400.00		
Bollards	13	EA	\$ 500.00	\$ 6,500.00		
<b>Transit Shelter</b>				\$ 73,600.00	\$ 55,670.00	\$ 17,930.00
Bus Stop	1	EA	\$ 63,600.00	\$ 63,600.00		
Bus Stop installation	1	EA	\$ 10,000.00	\$ 10,000.00		
<b>Shade Pavilion</b>				\$ 68,509.20	\$ 10,734.20	\$ 57,775.00
Shelter, 20' x 20' Wood	1	EA	\$ 52,669.20	\$ 52,669.20		
Shelter, 20' x 20' Wood, Installation	1	EA	\$ 15,840.00	\$ 15,840.00		
<b>Irrigation</b>				\$ 376,797.60	\$ 207,297.60	\$ 169,500.00
Irrigator Sleeve (Christine Street HDPE)	60	FT	\$ 75.00	\$ 4,500.00		
Irrigation System	24	EA	\$ 15,512.40	\$ 372,297.60		
<b>Chain Link Fence</b>				\$ 98,220.00	\$ 16,920.00	\$ 81,300.00
Chain Link Fence, 4' Ht. - Painted Black	2800	FT	\$ 32.40	\$ 90,720.00		
Chain Link Fence, 4' Ht. - Double Swing Gate	5	EA	\$ 1,500.00	\$ 7,500.00		
<b>Landscape</b>				\$ 176,134.90	\$ (66,972.10)	\$ 243,107.00
Seeding and Preparation	16525	SF	\$ 0.35	\$ 5,783.75		
Mulch - Wood	188	CY	\$ 51.00	\$ 9,588.00		
Mulch - Chat - 3" (Pollinator Gardens)	750	TN	\$ 6.25	\$ 4,687.50		
Mulch - Perma Bark	296	CY	\$ 65.95	\$ 19,521.20		
Compost Amendment	350	CY	\$ 5.00	\$ 1,750.00		
Decorative Rock	55	CY	\$ 51.99	\$ 2,859.45		
Trees	171	EA	\$ 500.00	\$ 85,500.00		
Shrubs - 3 Gallon	88	EA	\$ 35.00	\$ 3,080.00		
Perennials - 1 Gallon	2853	EA	\$ 15.00	\$ 42,795.00		
Bulbs	57	EA	\$ 10.00	\$ 570.00		
SubTotal				\$ 1,891,994.20		
Contingency - 15%				\$ 283,799.13		
<b>GRAND TOTAL</b>				\$ 2,175,793.33		
<b>CONSULTANTS</b>						
Quadrant Consulting	1	EA	\$ 6,500.00	\$ 6,500.00		
Quadrant Consulting - Change Order -No 1	1	EA	\$ 7,265.00	\$ 7,265.00		
Quadrant Consulting - Change Order -No 2	1	EA	\$ 2,200.00	\$ 2,200.00		
Idaho Power	1	EA	\$ 2,139.75	\$ 2,139.75		
Title One	1	EA	\$ 1,000.00	\$ 1,000.00		
Settlers Canal - Legal Fees	1	EA	\$ 5,115.00	\$ 5,115.00		
Art	1	EA	\$ 6,500.00	\$ 6,500.00		
Permitting Fees	1	EA	\$ 21,757.93	\$ 21,757.93		
Permitting Fees, SWPP, Irrigation	1	EA	\$ 5,000.00	\$ 5,000.00		
Geotechnical Engineering	1	EA	\$ 3,515.60	\$ 3,515.60		
<b>GRAND TOTAL</b>				\$ 60,993.28	\$ 172,228.55	\$ 1,719,765.65
<b>OVERALL PROJECT COST</b>				\$ 2,236,786.61	\$ 2,063,718.78	

# **GODDARD LINEAR PARK + PATHWAY APPLICATION MATERIALS**

Letters of Support



**WEST BENCH**  
Neighborhood Association



February 2nd, 2021

Open Space and Clean Water Advisory Committee  
City of Boise Parks and Recreation  
1104 W Royal Blvd  
Boise, ID 83706

Dear members of the Open Space and Clean Water Advisory Committee,

The West Bench Neighborhood Association is pleased that the City of Boise is pursuing additional funding through the Open Space and Clean Water Levy for construction of a linear park on the canal bank along Goddard Rd directly across from Capital High School.

Residents in the West Bench Neighborhood Association (WBNA) partnered with Energize Our Neighborhoods in 2018 to identify priority projects to enhance and strengthen the neighborhood. The linear park project received the highest number of votes from residents. A significant number of area residents provided input during multiple public engagement opportunities, including priority features of the park.

For years, this dirt canal bank has been used for littering, dumping, recreational 'off-roading,' and parking. A large segment does not have any existing sidewalk or safe method for walking or biking where both heavy pedestrian and traffic exist. A pathway and landscaping along this section of Goddard Rd will greatly improve non-motorized connectivity for our neighborhood, increase outdoor recreational opportunities, provide gathering space and increased sense of neighborhood pride, and restore native plants and habitat along the canal. WBNA residents will continue to be engaged, participate, and volunteer as possible throughout the project.

The West Bench Neighborhood Association most enthusiastically offering support of this funding application for the linear park project along Goddard.

Sincerely,  
Ronnie Marler  
President WBNA





Thursday, February 18th, 2021

Open Space and Clean Water Advisory Committee  
City of Boise Parks and Recreation  
1104 W Royal Blvd  
Boise, ID 83706

Dear Open Space and Clean Water Advisory Committee,

We all know it - the Treasure Valley is booming. And it is in this pivot point in the Treasure Valley's history where the Canals Connect Community Coalition (CCCC) was born. This coalition is a growing body of engaged residents, non-profit organizations and businesses who support growing interconnected pathways to develop a safe transportation system that can alleviate traffic congestion, public safety hazards with cycling and pedestrian collisions with cars, poor air and water quality, and provide corridors of economic mobility while also providing critical open space access for all in Boise.

And the CCCC is excited that the West Bench Neighborhood Association leadership is pursuing funding from the Open Space and Clean Water Levy in order to complete construction of a linear park on the Settlers Canal Bank along Goddard Road, across from Capitol High School. This park presents an opportunity to demonstrate the possibility of safe canal adjacent open space, an important step to move this conversation and process forward in Boise.

Fostering an urban pathway system, such as with the Goddard Linear Park, along irrigation right of ways connects residents to the agrarian history of our region while helping us define our own connections that dictate fiscally responsible, community based enhancements that also spur robust economic development. The Boise River Greenbelt in Garden City and the Indian Creek Pathway in Caldwell are prime examples of how walkable corridors in our growing cities can bring economic prosperity to the adjoining properties, and provide safe corridors for transportation, especially near schools. This particular park would also bring recreation and environmental health benefits to an area of Boise that traditionally has not had access to varied, close to their neighborhood open space opportunities available in other parts of Boise despite property owners funding open space levy initiatives.

It's vital that we continue to cultivate the things that we love about living here so that those benefits reach everyone's doorstep in Boise. We need to be innovative in our solutions to alleviate the pressures of growth, and we all need to work together to ensure that we don't lose opportunities to preserve our unique open spaces, our health, and the quality of life that we all love.

Thank you, again, for fostering this important conversation and subsequent action. Please don't hesitate to reach out if there is anything that we can assist with.

Respectfully,  
Canals Connect Community Coalition Steering Committee



# Capital High School

8055 Goddard Road  
Boise, Idaho 83704

Phone: 208-854-4490  
Fax: 208-854-4491

February 04, 2021  
Open Space and Clean Water Advisory Committee  
City of Boise Parks and Recreation  
1104 W Royal Blvd  
Boise, ID 83706

Dear Committee,

Capital High School is pleased that the City of Boise is pursuing funding through the Open Space and Clean Water Levy for construction of a linear park on the canal bank along Goddard Rd across from Capital High School.

Staff and students at Capital High partnered with Energize Our Neighborhoods during engagement opportunities, providing input on priority features and elements for a linear park project to benefit the Capital High community and the neighborhood at large.

For years, this dirt canal bank has been used for littering, dumping, recreational 'off-roading,' and parking. A large segment does not have any existing sidewalk or safe method for walking or biking. A pathway and landscaping along this section of Goddard Rd will greatly improve non-motorized connectivity for our school and the neighborhood, increase outdoor recreational opportunities, restore native plants and habitat along the canal, and provide opportunities for the horticulture program to utilize the space for research and projects. Capital High staff and students will continue to be engaged, participate, and volunteer as possible throughout the project.

Capital High School is pleased to submit this letter offering support of this funding application for the linear park project along Goddard.

Sincerely,

Derek Gardner  
Principal  
Capital High School

February 3, 2021

Open Space and Clean Water Advisory Committee  
City of Boise Parks and Recreation  
1104 W Royal Blvd  
Boise, ID 83706

Dear Committee,

Capital High School is pleased that the City of Boise is pursuing funding through the Open Space and Clean Water Levy for construction of a linear park on the canal bank along Goddard Rd across from Capital High School.

Staff and students at Capital High partnered with Energize Our Neighborhoods during engagement opportunities, providing input on priority features and elements for a linear park project to benefit the Capital High community and the neighborhood at large.

For years, this dirt canal bank has been an eyesore and used for littering, dumping, recreational 'off-roading,' and parking. A large segment does not have any existing sidewalk or safe method for walking or biking. Improving this section of the canal with landscaping will provide many benefits to our school community. Restoring native plants and habitat along the canal, and providing opportunities for the horticulture program and environmental science classes to utilize the space for research and projects. Our Capital High staff and students are looking forward to engaging, participating, and finding ownership in this project that is so close to our home school.

Capital High School is pleased to submit this letter offering support of this funding application for the linear park project along Goddard.

Sincerely,  
Violet Martin  
Horticulture Science Teacher